



# Minimal Digital Ecosystem (MDE)

BURKINA FASO, May 2024

## What is MDE ??

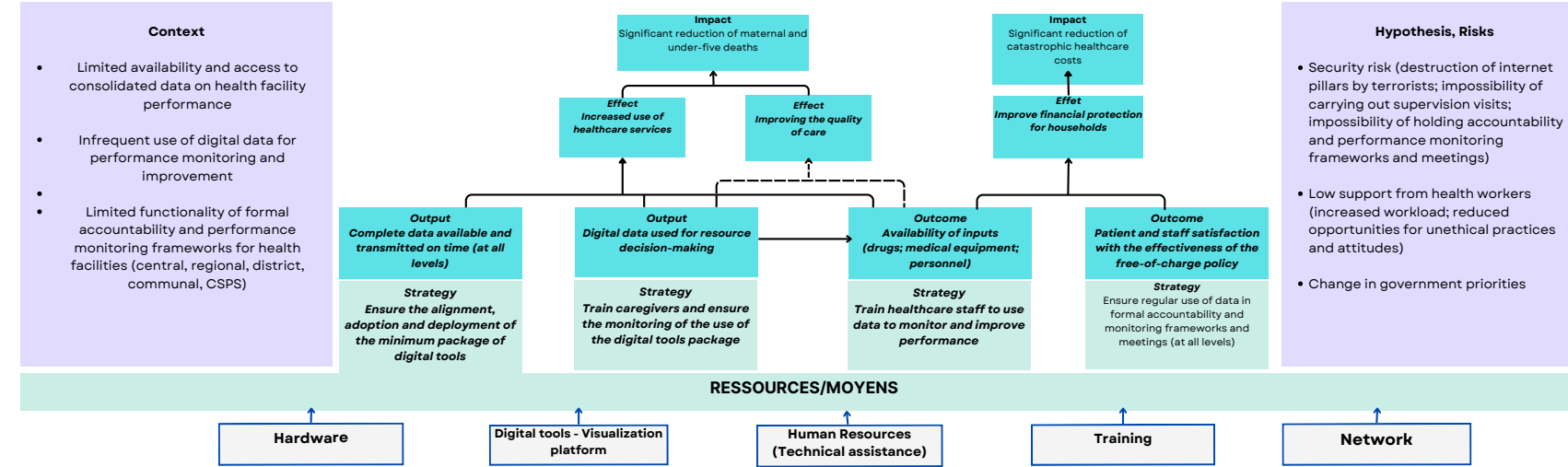
A set of digital tools already existing in Burkina Faso healthcare system or newly developed.

- Tools deployed simultaneously in healthcare facilities and at community level
- Explicit aim of complementarity and synergy between these tools
- Dashboard to visualize key indicators derived from the use of the various tools, in order to facilitate decision-making

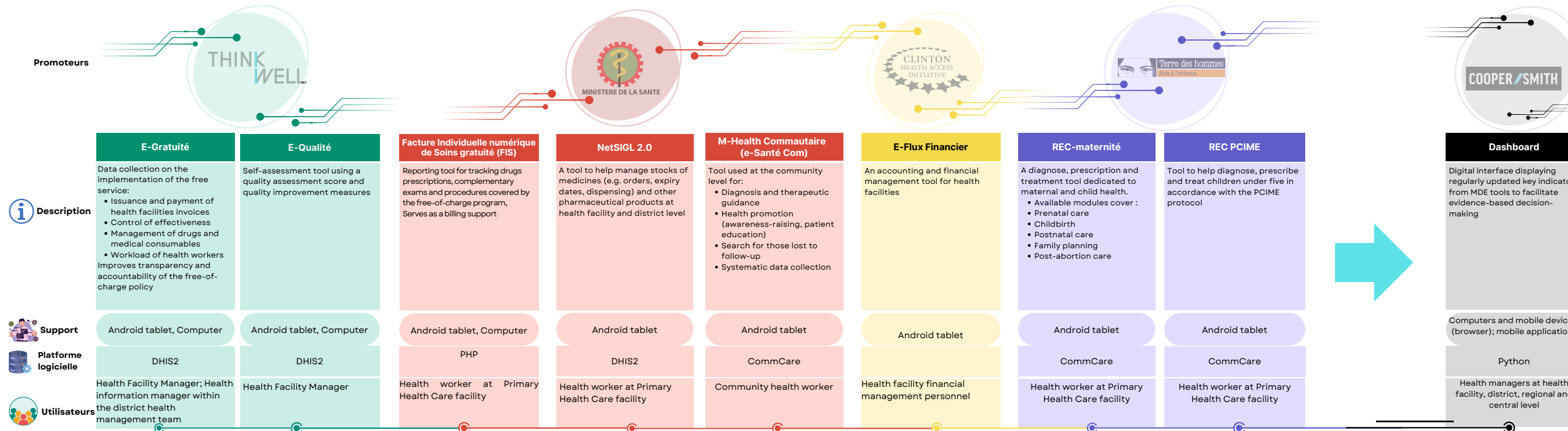
## What is the aim of MDE?

It is expected that the introduction of digital tools into the activities of facilities and caregivers involved in the free healthcare policy, and more generally in primary healthcare, will contribute to the improvement of the efficiency, quality and equity of the care offered, as well as governance in the healthcare sector.

## THEORY OF CHANGE



## MDE TOOLS



## Coordination and Financing

- Successful implementation and scaling-up of the MDE depends on effective coordination and financing.
- Coordination is provided by the Health Financing Reforms Technical Secretariat, with support from the NGO ThinkWell.
  - Funding is provided by the MSHP and its technical and financial partners.

Abréviations : DHIS2 District Health Information Software ; PHP Hypertext Preprocessor

**The Research Team:** Joel Arthur KIENDREBEOGO, Rémi KABORE, Yamba KAFANDO, Issa KABORE, Charlemagne TAPSOBA, David ZOMBRE, Relwendé NACANABO, Rafiatou T Daliah Marie NACOULMA, Habibou Noellie KONSEBO, Orokia Marthe SORY, Simon TIENDREBEOGO, Toudala PARE

Infos RESADE

To get answers to all your evaluation questions, contact us at the following address: [association.resade@gmail.com](mailto:association.resade@gmail.com)  
To find out more about our services and activities, visit our website: <https://resade.org>  
Tel: +226 70061335; Address: 04BP8398 Ouagadougou 04, Arrondissement 6, Sector 28, Ouagadougou, Burkina Faso